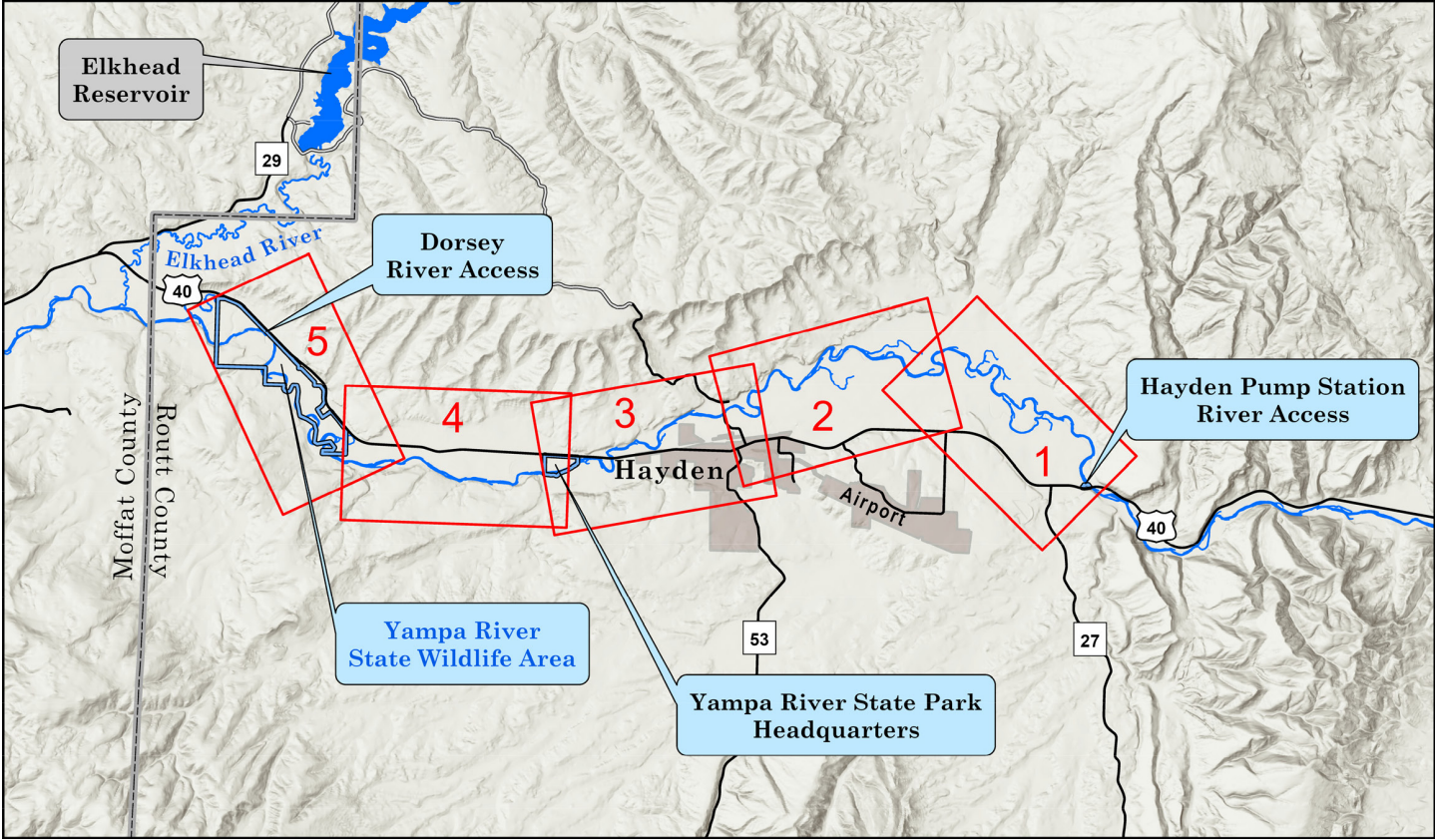


YAMPA RIVER GUIDES

Draft

HAYDEN REACH

Maps Only



HAYDEN REACH LEGEND

HYDROGRAPHIC FEATURES

- Stream or Mainstem Ditch
- Intermittent Stream
- Branch Ditch
- Irrigation Pipe or Culvert
- Irrigation Pump
- Center-Pivot Irrigation
- River Mile

ROADS AND STRUCTURES

- Trail or Closed 4WD
- 4WD
- Graded Road
- Paved Road
- Railroad
- Graded Parking
- Paved Parking
- Power Line
- Building

ADMINISTRATIVE BOUNDARIES

- Colorado Parks and Wildlife
- Bureau of Land Management

ENVIRONMENTAL FEATURES

- Active or Prehistoric Floodplain
- Riparian Herbaceous/Short Shrub
- Riparian Tree/Tall Shrub Canopy
- Upland Tree/Shrub Cover
- Fluvial Sand or Gravel
- Gravel Quarry

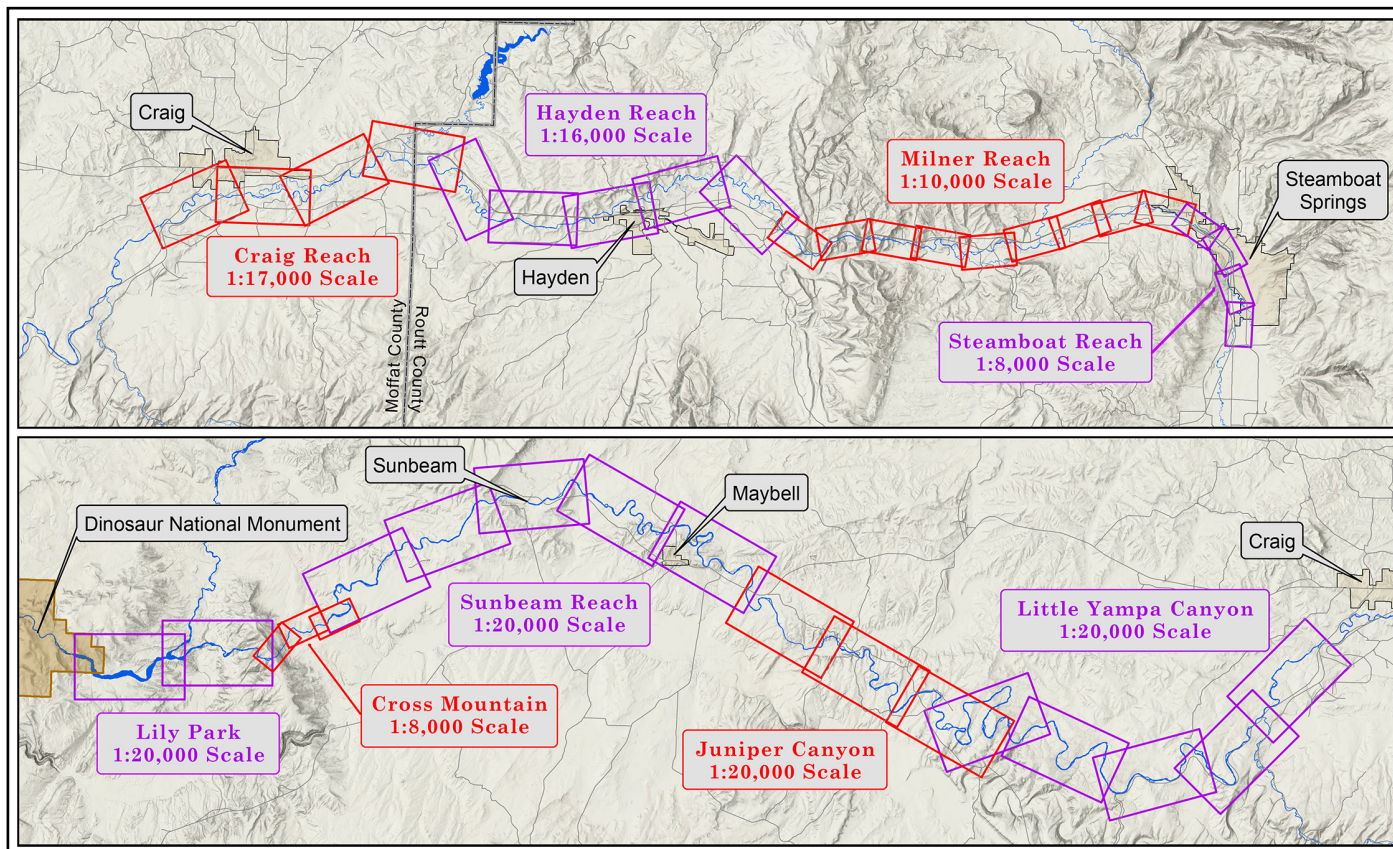
RECREATIONAL AREA SYMBOLS

- Fee Area
- Information Kiosk
- Picnic Tables
- Rest Rooms
- Potable Water
- Showers
- Laundry Facilities
- RV Camping
- RV Dump Station
- Designated Camping
- No Camping
- Longterm Parking
- Trailerred Craft Access

YAMPA RIVER GUIDES

Yampa River Guides are a FREE, downloadable series of map guides in PDF format, designed for recreational users of the Yampa River. When the entire series is completed they will cover approximately 158 miles of river, from the Chuck Lewis State Wildlife Area upstream of Steamboat Springs to the Deerlodge Park boat ramp on the eastern boundary of Dinosaur National Monument.

The Yampa River Guide Series



How to Download and Print Your Guides

Go to <https://guides.wildyampa.com> to download the most recent versions of the Yampa River Guides. Every attempt will be made to keep these guides up-to-date as boater access and river conditions evolve in the future. You can check the version date of your download at the bottom of the front cover and on each map page.

PRINTING ON LEGAL PAPER

Ideally, your Yampa River Guide should be printed on legal-size paper, using a duplex (prints to both sides) printer. Whether you can print to both sides of the paper or not, be sure to select the “ACTUAL SIZE” option in the print wizard (this keeps the printer software from adding an extra margin to the printed page).

Duplexed pages will lay out like a book, with each map page on the right and its corresponding text page facing it on the left. Your pages can then be stapled, or laminated and spiral bound for a more durable guide. You might also consider printing on waterproof paper.

PRINTING ON LETTER PAPER

Yampa River Guides can also be printed successfully on letter-size paper—the maps and print will just appear smaller. When printing on letter-size paper, be sure to select the “FIT” or “FIT TO PAGE” option in the print wizard.

Help Keep These Guides Accurate

The author of this guide makes no claim to infallibility. Further, The Yampa River is always in a state of flux, so over time even the best map is destined to become inaccurate. Legal river access for boaters is also a moving target. If you discover errors or have suggestions for improvement, please E-mail Pete@wildyampa.com with “Yampa River Guides” in the subject line.

Terms of Use

The Yampa River Guides are FREE to download and print for personal recreational use. Any other reproduction or publication of these guides, or any portions thereof, is strictly prohibited.

If someone is charging you for the contents of this guide, they are in copyright violation.

Maps, text and uncredited photographs © Peter A. Williams

About The Maps

As has become the convention with river guides, the Yampa River Guide maps and their accompanying text are laid out with the river running from the **bottom to the top** of the page.

The river channel and environmental features depicted on these maps were originally drawn directly on top of the 2019 National Agricultural Imagery Program (NAIP) **aircraft overflight photography**. Since 2019, the river has already significantly changed its channel in several locations. The present maps have been redrawn where necessary using the most recent NAIP photography (2023). New NAIP photography usually becomes available every two years, so in the interim individual maps may also be revised where necessary using publicly available Sentinel-2 satellite photography (much lower in resolution, but updated at least weekly).

An aerial photograph, or the map drawn from it, can only capture a dynamic, seasonally evolving river in one moment of time. These maps depict the river during a period of low flows, when the river channels are filled with **exposed sand and gravel bars**. Higher flows in the spring will inundate many of these features, and normally dry backwater channels may even be floatable under those conditions. Conversely, it is assumed that during lower flows boaters will appreciate having some idea of where the sand and gravel is likely to emerge.

The **river miles** (RM) depicted on these maps are measured upstream from the confluence of the Yampa and Green rivers at Echo Park, in Dinosaur National Monument. They were created specifically for these maps, and follow a line up the center of the main river channel as it existed in the fall of 2019. Note that there has never been a formal, “official” set of designated river miles for the Yampa River. River miles depicted on maps elsewhere have typically been based on long out-of-date hydrographic data, and can vary from the Yampa River Guide maps by as much as a mile or more.

Private Property

Private property boundaries are not represented on any of these maps. The only property boundaries depicted in the Yampa River Guides are for publicly owned properties specifically administered for public access—***everywhere else must be assumed to be private lands and closed to public access.***

Under Colorado law, private ownership of the river bank does not stop at the high water line. While the water and fish may belong to someone else, the river bottom is the property of the abutting landowners. Under these circumstances, standing on the river bottom, even in moving water, is trespassing. This can especially be a problem once river flows drop enough to require dragging your craft over obstacles. Please avoid floating the Yampa River when and where such conditions exist.

Much of the Yampa River from Steamboat Springs to Dinosaur National Monument flows through private land. Please help us stay on good terms with our private landowning neighbors, so boaters can continue to float the Yampa River without further restrictions in the future. Always stay in your boat when floating through private property.

Safety

The Yampa River Guides are intended for use as a general resource for boaters. ***They are not a substitute for staying alert to hazards and practicing good boating skills.*** Rivers are dynamic environments, and conditions can change dramatically as water levels rise and fall.

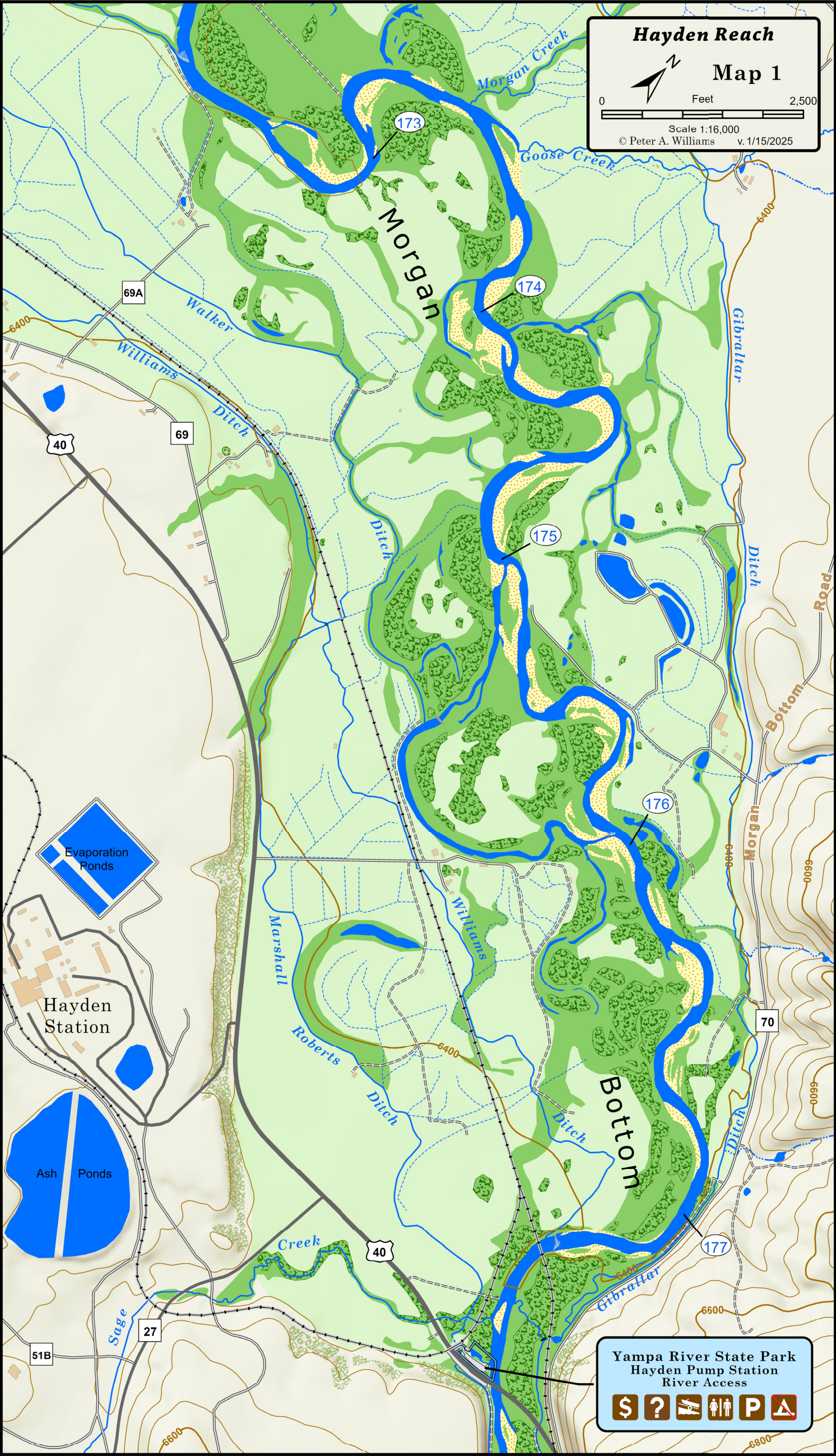
With the exception of the Cross Mountain and Juniper canyons, experienced boaters will find the “whitewater” character of the portions of the Yampa River covered by the Yampa River Guides to be mild. Nevertheless, natural hazards such as strainers or entrained wood may still be encountered. Human-made structures, especially bridges and diversion structures, can also create significant hazards to boaters. The most notorious (but certainly not all) of these structural hazards have been identified on the maps with **red-bordered labels**. When you see these labels, pay close attention to the “**Hazard!**” description in the accompanying text.

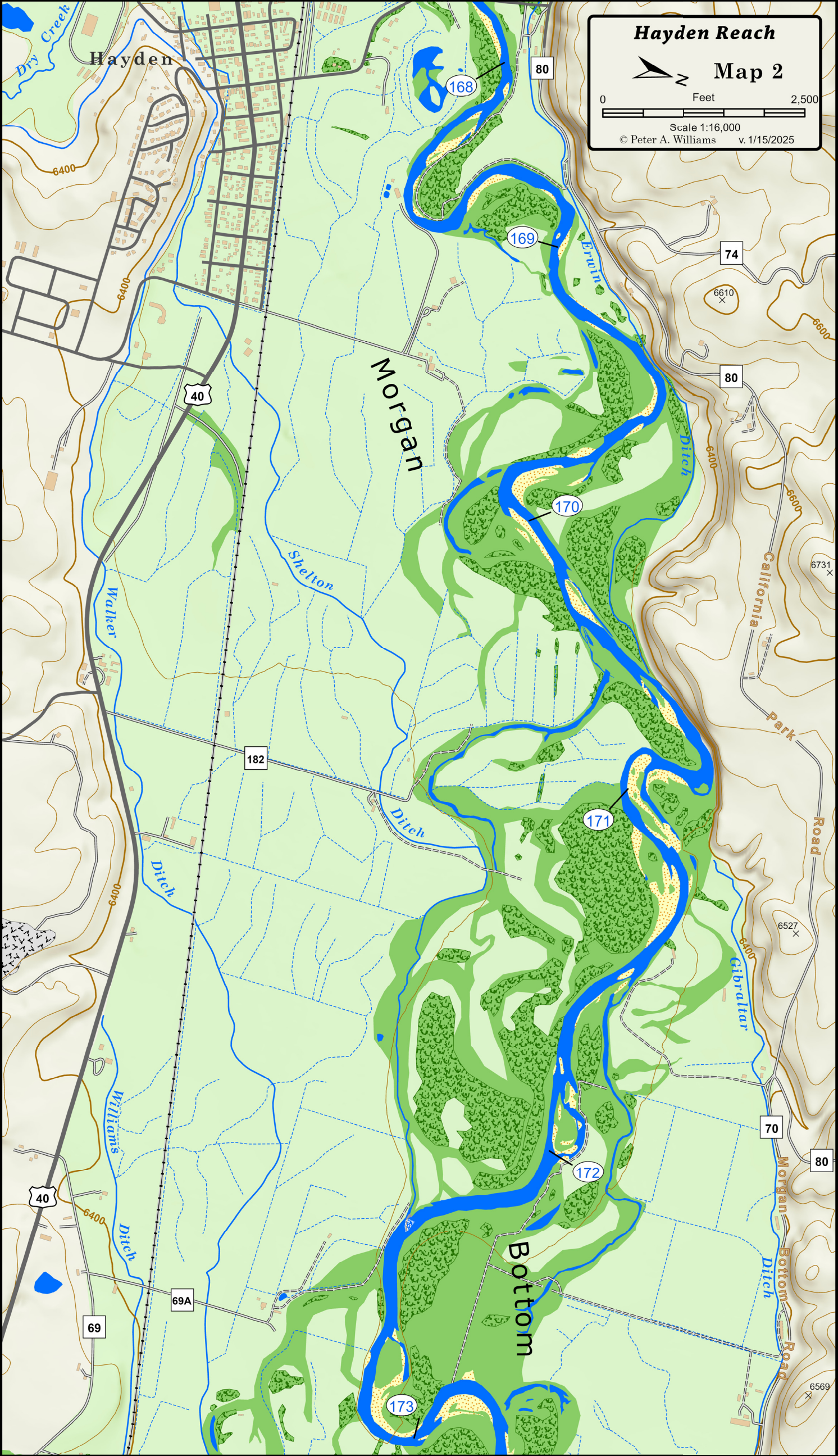
Always come prepared for the unexpected. Pay attention, and always keep an eye out downstream. Proper personal equipment should always include a PFD (Personal Flotation Device), appropriate footwear, and sunscreen. And, although much of the Yampa is flatwater, the knowledge gained from a swiftwater rescue course might one day help you save a life, even in downtown Steamboat Springs. In Cross Mountain and Juniper canyons such knowledge is essential.

Ultimately YOU are responsible for your own and your companions’ safety.

Disclaimer

The author and distributors of the Yampa River Guides are not responsible for trespass, property damage, personal injury, or death resulting from activities involving anyone using or possessing these river guides.





Hayden Reach



Map 2

0 Feet 2,500

Scale 1:16,000

© Peter A. Williams v. 1/15/2025

Hayden Reach



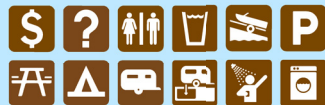
Map 3

0 Feet 2,500

Scale 1:16,000

© Peter A. Williams v. 1/15/2025

Yampa River State Park
Headquarters River Access



Diversion
Structure

165

166

167

40

80

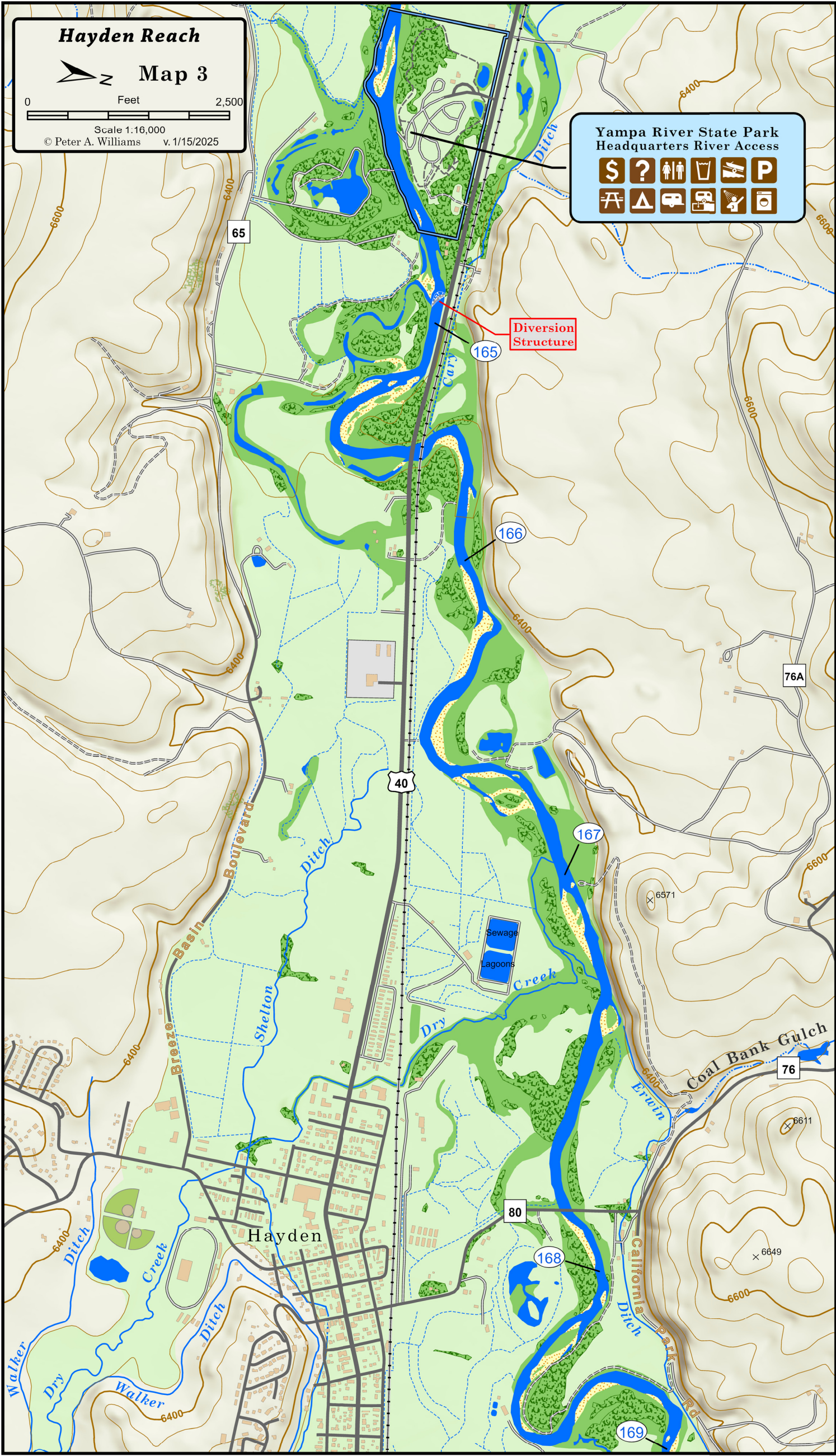
168

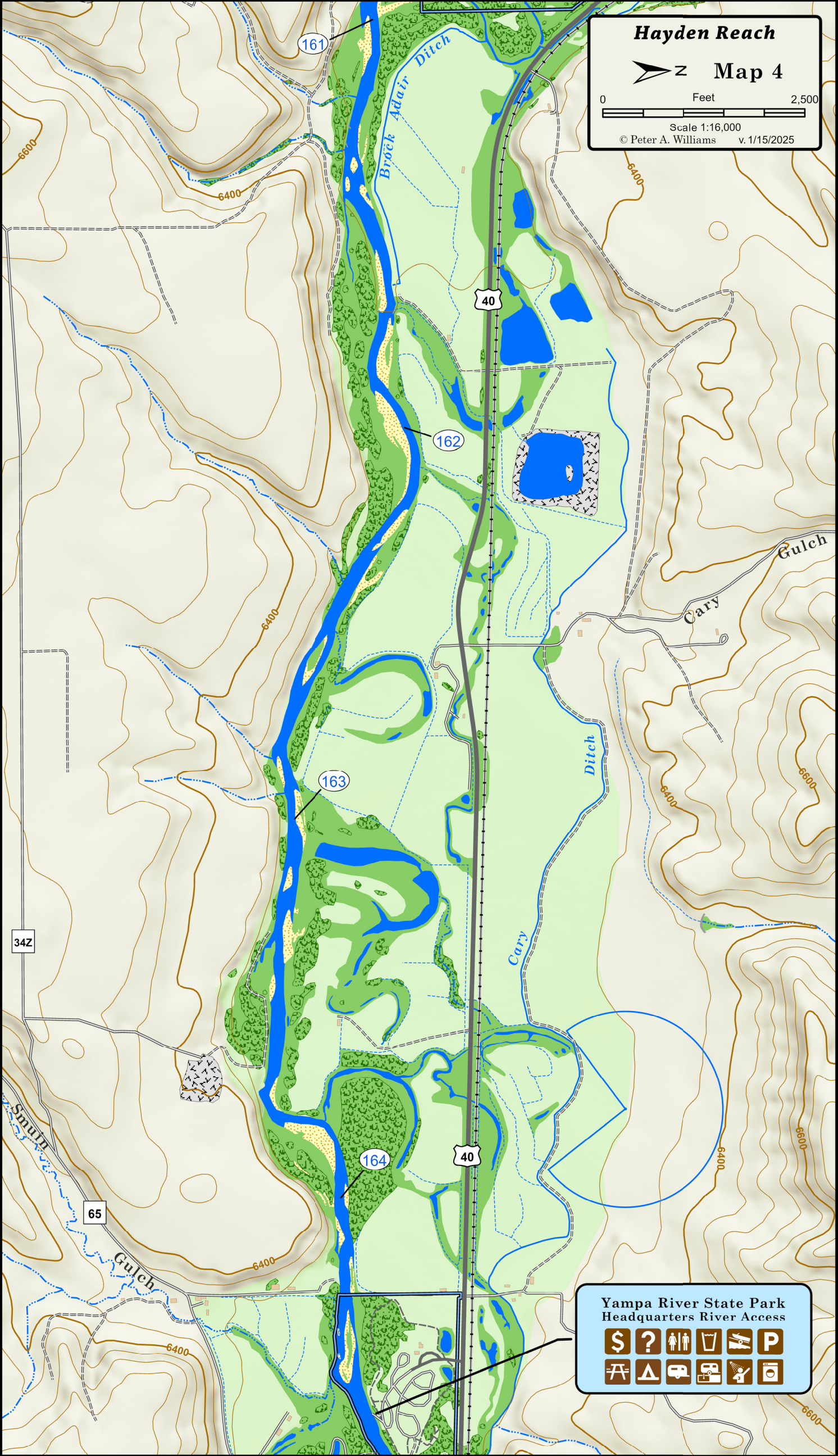
169

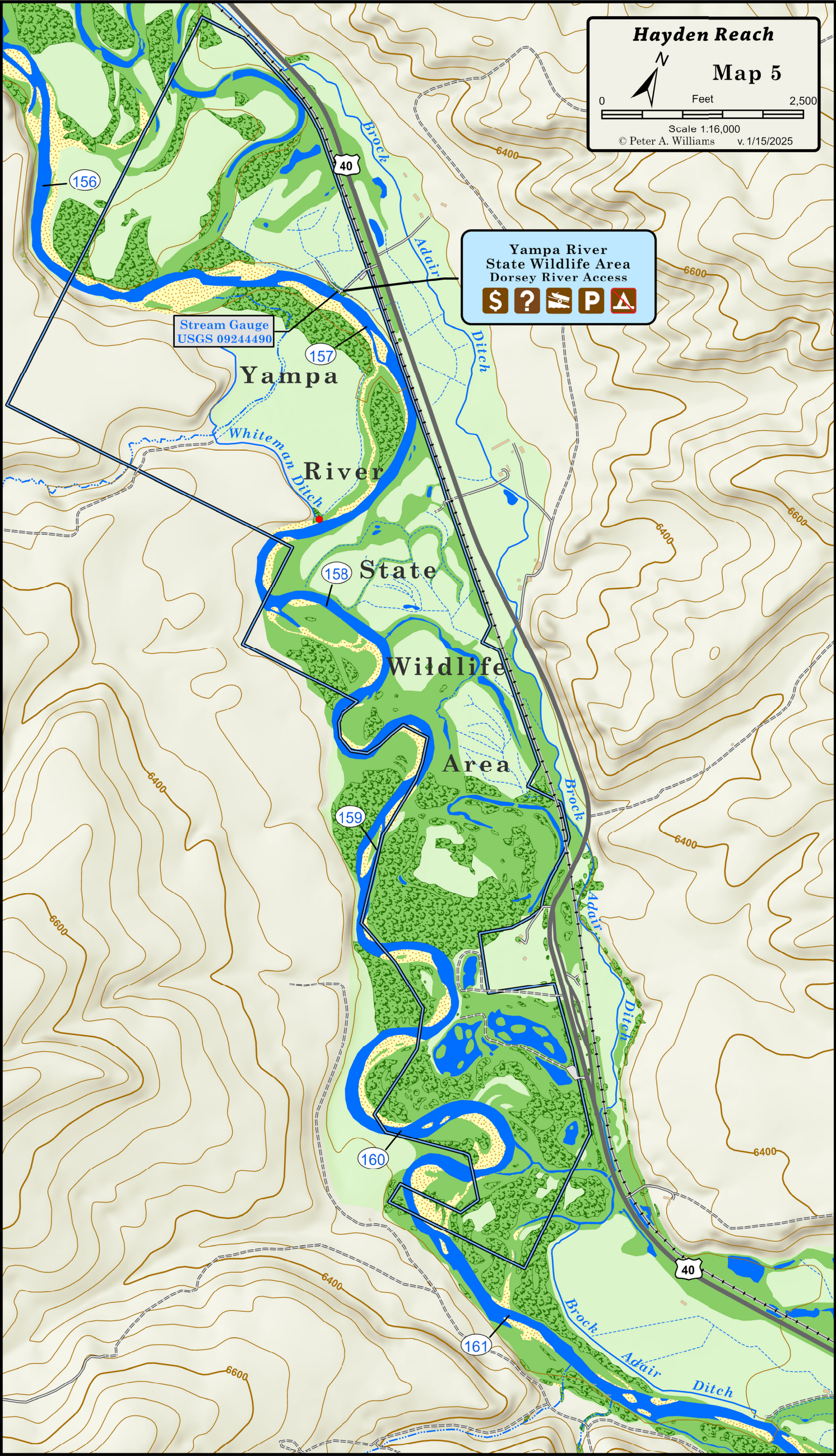
76A

76

Hayden







Hayden Reach

Map 5

0

Feet

2,500

Scale 1:16,000

© Peter A. Williams v. 1/15/2025

Yampa River
State Wildlife Area
Dorsey River Access

\$

?

P

THE BACK PAGE

Hayden Reach Stream Gauges

RM 156.9 **USGS #09244490** Yampa River above Elkhead Creek

For quick links to all USGS gauges, try the new USGS National Water Dashboard at
<https://dashboard.waterdata.usgs.gov/app/nwd/en/>

The **Yampa River above Elkhead Creek** gauge is located at the Dorsey boat ramp, at the very end of the Hayden Reach. No significant tributaries add water to the Yampa River between the Hayden Pump Station and Dorsey, but irrigation ditches could potentially be removing water—so it is possible that you will see slightly higher flows at the pump station.

Additional information and further flow recommendations for the Hayden Reach can also be found at <https://friendsoftheyampa.com/know-before-you-go-hayden/>.